

# I - 494 CORRIDOR COMMISSION

## 2026 LEGISLATIVE POSITIONS

### Who We Are

The I-494 Corridor Commission is made up of elected officials and city administrators from Bloomington, Eden Prairie, Edina, Minnetonka and Richfield, and supported by representatives from MnDOT, the Metropolitan Council, and the private business community.

The Commission, together with its Commuter Services outreach program, encourages economic growth and regional prosperity through improved transportation options and supports commuter alternatives along with roads, bridges and transit improvements as a combined solution to slow the growth of traffic congestion and improve mobility.

Working through employers to reach their employees with options for sustainable commuting is incredibly effective. Commuter Services works with over 1,000 employers and multi-tenant properties with a wealth of resources and services aimed at converting drive-alone commuters into a sustainable commute mode. We focus on reducing vehicle miles driven by commuters by assisting drive alone commuters convert to a sustainable commute mode choice.

### Resources include:

- Keep employers apprised of transit routes that serve their locations and provide up-to-date bus schedules, promote transit use, LRT/BRT and Metro micro
- Hold onsite commuter fairs with employers and multi-tenant office buildings
- Provide customized commute resource displays for employers
- Transportation Demand Management (TDM) Planning, Implementation, Measurement
- Promote and manage preferential carpool/vanpool parking for employers and provide carpool and vanpool ride-matching
- Free outdoor bike racks for employers, maps, resources
- Construction and transit project updates
- Telework/Hybrid Work Arrangements – Dozens of resources including sample policies, employee agreement, ergonomic and home office safety guidelines, managing hybrid teams and much more



### CONTACT

**I-494 Commision Chair**  
**Rebecca Schack**  
Minnetonka City Council  
612-590-3735  
rschack@minnetonkamn.gov

**Legislative Counsel**  
**Katy Sen**  
Messerli Kramer  
651-556-9220  
ksen@messerlikramer.com

**Executive Director**  
**Melissa Madison**  
I-494 Corridor Commission / Commuter Services  
612-749-4494  
melissa@494corridor.org



**I-494 CORRIDOR COMMISSION**  
*Reducing Traffic Congestion*

**Bloomington • Eden Prairie • Edina • Minnetonka • Richfield**

**www.494corridor.org**

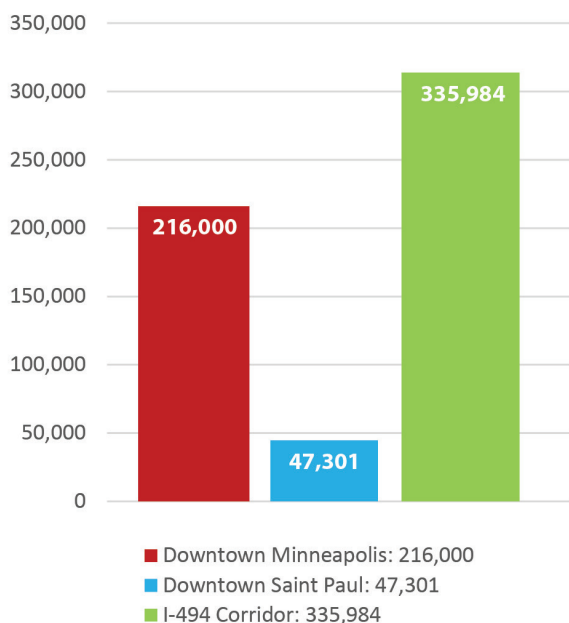
Commuter Services used a state grant to create Twin Cities Telework. With the funds we have built a robust website and created a wealth of resources for employers, managers and teleworkers including:

- Customizable Telework and Hybrid Work Policies
- Teleworker/Hybrid Employee Agreement
- Do's and Don'ts for Telework and Hybrid Work Employees
- Tips for Managing Teleworkers/Hybrid Workers
- Home Office Safety and Ergonomics Guidelines
- Best practice Training for Managers and Teleworkers
- Ask An Expert
- Mental Health Tips for Teleworkers
- Resources for Creating Connection on a Hybrid Team
- Telework Trends Newsletter
- Quarterly surveying of employers as well as commuters on telework and hybrid topics
- and more!

**Commuter Services has assisted 514 employers and 2,162 teleworkers statewide with the funding in the past 48 months.**

## I-494 Corridor Jobs

There are more jobs along the I-494 corridor from the airport to I-394 than downtown Minneapolis and downtown Saint Paul combined.



*Data source: Minnesota Department of Employment and Economic Development, the Metropolitan Airports Commission, the Metropolitan Council and the Minneapolis Downtown Council.*

## Legislative Request

### Sustainable Funding

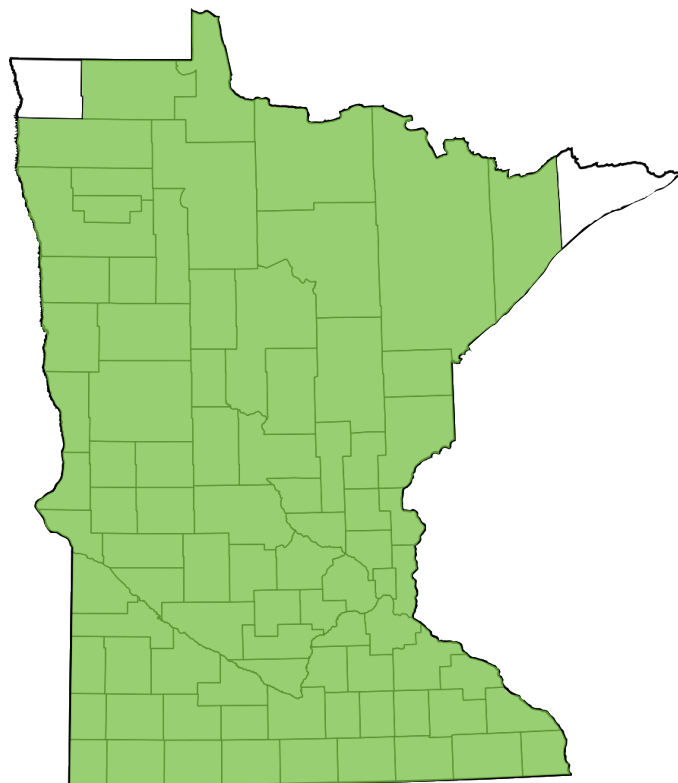
The 494 Corridor Commission has received annual state funding for over a decade to promote alternatives to driving alone to work. During the 2025 Legislative Session, the I-494 Corridor Commission received funding for Fiscal Year 2026 but not Fiscal Year 2027. Additional funding for Fiscal Year 2027 is critical to sustaining the Commission's services. The Commission requests \$300,000 per year in on-going funding to support their services, including:

- Telework
- Vanpools
- Carpools
- Transit
- Biking to work

The Commission is focused on ensuring this funding is ongoing and sustainable into future years.

## State of MN

People from 85 out of 87 Counties use I-494 between Hwy 169 and the MSP airport daily.



*Data source: 2019 Metro District NexTen report using GPS data through StreetLight InSight Study*



# Jobs through Transportation and Transit Improvements and Corridors of Commerce

With more jobs than downtown Minneapolis and downtown Saint Paul combined, the I-494 corridor is a critical economic development driver for Minnesota. Investing in the corridor's transportation infrastructure will keep this engine running, growing and producing dividends for the state.

## Support Transportation Economic Development Program

The Commission strongly encourages increased investment in the Transportation Economic Development (TED) program. The TED program was created to support local transportation projects that create jobs and improve economic opportunities while making needed improvements to our roadways and interchanges. It offers innovative financing options and allows private sector partners to participate, e.g. United Health/Bren Road and I-494/Penn Ave.

A large number of excellent examples of TED funding candidates are highlighted on our project priority map. They have local backing and a portion of the funds

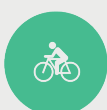
necessary to proceed. The TED program can provide a funding match.

## Support Corridors of Commerce

The Corridors of Commerce Program funds projects that reduce barriers to commerce by improving the safe and efficient movement of goods and services throughout the state. It aims to increase highway capacity and freight movement on segments where bottlenecks occur. The program uses trunk highway bonding for projects that are not already in the state's four-year State Transportation Improvement Program (STIP).

The Commission deeply appreciates the Corridors of Commerce funding for the I-494 corridor project. The Commission urges the legislature to continue funding the Corridors of Commerce program going forward.

**When employers provide commuter programs such as a transit benefit, telework, vanpools, preferential carpool parking; one in five employees kick their solo commuting habit. That's a 20% shift!**



## I-494: Airport to 169 Project



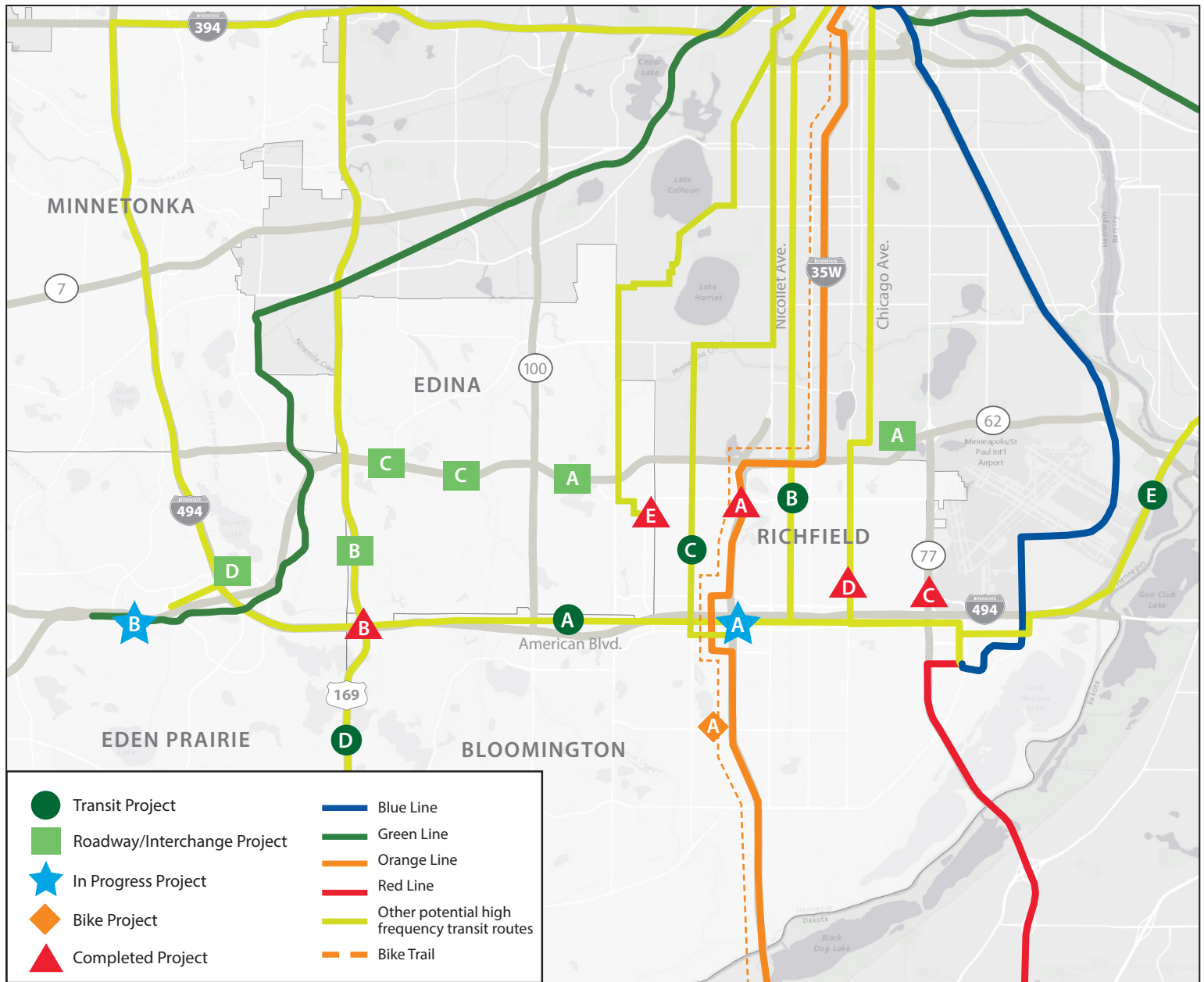
Work is underway on a major state and federally funded project to improve I-494 from TH 169 to the MSP Airport. The first phase, scheduled to be completed at the end of 2026, includes significant improvements to I-494/I-35W interchange, several new bridges over I-494, and a new E-ZPass lane between East Bush Lake Road and I-35W.

The second phase, scheduled to start in 2027, will complete the project vision by extending the new E-ZPass lane from TH 169 to TH 77, finalizing improvements at 82nd Street, and replacing a railroad bridge to allow the expansion. When completed in 2030,

this project will increase capacity on I-494 and dramatically improve the reliability of the average rush hour trip.

**I-494 is a heavily used statewide corridor**

- 23% of trips on I-494 are from greater MN
- People from 85 out of 87 Minnesota counties use I-494 between Hwy 169 and the MSP Airport daily



## I-494 Corridor Commission Priority Infrastructure Projects

(projects below correspond to map above, not in priority ranking)

### Roadway and Interchange Projects

- A** Improve TH 62 in each direction to reduce traffic congestion from Hwy. 77 to Hwy. 169
- B** Hwy. 169/Valley View Road interchange reconstruction
- C** Reconstruct the Tracy Ave. & TH 62 interchange and the Gleason Rd. & TH 62 interchange
- D** Flyover Exit Ramp from NB I-494 to WB TH 212/TH 5 in Eden Prairie

### Bike Projects

- A** Orange Bike Trail - Long distance route connecting Burnsville, Bloomington, Richfield, and Minneapolis

### Transit Projects

- A** American Blvd. Arterial BRT, connecting the Blue, Red, Orange and Green Transitways with the high employment corridor along I-494
- B** Nicollet Arterial BRT
- C** Johnson/Lyndale/Penn Arterial BRT
- D** Hwy. 169 BRT, connecting Dakota and Scott Counties with Eden Prairie, Bloomington, Edina, Minnetonka, Hopkins, St. Louis Park and Downtown Minneapolis
- E** Riverview/W. 7th Street Corridor; Transit service connecting Bloomington, MSP and downtown Saint Paul

### In Progress Projects

- A** I-494 Airport to 169
- B** METRO Green Line Ext/Southwest LRT (Testing in progress)

### Completed Projects

- A** METRO Orange Line BRT
- B** I-494/Hwy. 169 Interchange
- C** 77th Street underpass under TH 77
- D** METRO D-Line arterial BRT connecting Bloomington, Richfield and downtown Minneapolis
- E** METRO E Line BRT