

I-494 CORRIDOR COMMISSION

2025 LEGISLATIVE POSITIONS

Who We Are

The I-494 Corridor Commission is made up of elected officials and city administrators from Bloomington, Eden Prairie, Edina, Minnetonka and Richfield, and supported by representatives from MnDOT, the Metropolitan Council, and the private business community.

The Commission, together with its Commuter Services outreach program, encourages economic growth and regional prosperity through improved transportation options and supports commuter alternatives along with roads, bridges and transit improvements as a combined solution to slow the growth of traffic congestion and improve mobility.

Working through employers to reach their employees with options for sustainable commuting is incredibly effective. Commuter Services works with over 1,000 employers and multi-tenant properties with a wealth of resources and services aimed at converting drive-alone commuters into a sustainable commute mode. We focus on reducing vehicle miles driven by commuters by assisting drive alone commuters convert to a sustainable commute mode choice.

Resources include:

- Telework/Hybrid Work Arrangements – Dozens of resources including sample policies, employee agreement, ergonomic and home office safety guidelines, managing hybrid teams and much more
- Hold onsite commuter fairs with employers and multi-tenant office buildings
- Keep employers apprised of transit routes that serve their locations and provide up to date bus schedules
- Provide customized commute resource displays for employers
- TDM Planning, Implementation, Measurement
- Promote and manage preferential carpool/vanpool parking for employers
- Carpool and vanpool ride-matching
- Free outdoor bike racks for employers, maps, resources
- Construction and transit project updates



CONTACT

I-494 Commission Chair
Rebecca Schack
Minnetonka City Council
612-590-3735
rschack@minnetonkamn.gov

Legislative Counsel
Katy Sen
Messerli Kramer
651-556-9220
ksen@messerlikramer.com

Executive Director
Melissa Madison
I-494 Corridor Commission / Commuter Services
612-749-4494
melissa@494corridor.org



I-494 CORRIDOR COMMISSION
Reducing Traffic Congestion

Bloomington • Eden Prairie • Edina • Minnetonka • Richfield

www.494corridor.org

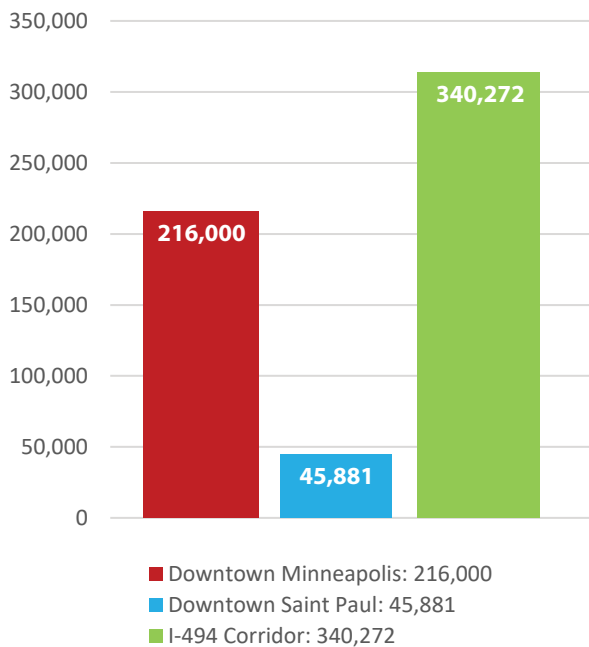
Commuter Services used a state grant to create Twin Cities Telework. With the funds we have built a robust website and created a wealth of resources for employers, managers and teleworkers including:

- Customizable Telework and Hybrid Work Policies
- Teleworker/Hybrid Employee Agreement
- Do's and Don'ts for Telework and Hybrid Work Employees
- Tips for Managing Teleworkers/Hybrid Workers
- Home Office Safety and Ergonomics Guidelines
- Best practice Training for Managers and Teleworkers
- Ask An Expert
- Mental Health Tips for Teleworkers
- Resources for Creating Connection on a Hybrid Team
- Telework Trends Newsletter
- Quarterly surveying of employers as well as commuters on telework and hybrid topics
- and more!

Commuter Services has assisted 514 employers and 1,527 teleworkers statewide with the funding in the past 36 months.

I-494 Corridor Jobs

There are more jobs along the I-494 corridor from the airport to I-394 than downtown Minneapolis and downtown Saint Paul combined.



Data source: Minnesota Department of Employment and Economic Development, the Metropolitan Airports Commission, the Metropolitan Council and the Minneapolis Downtown Council.

Legislative Request

Sustainable Funding

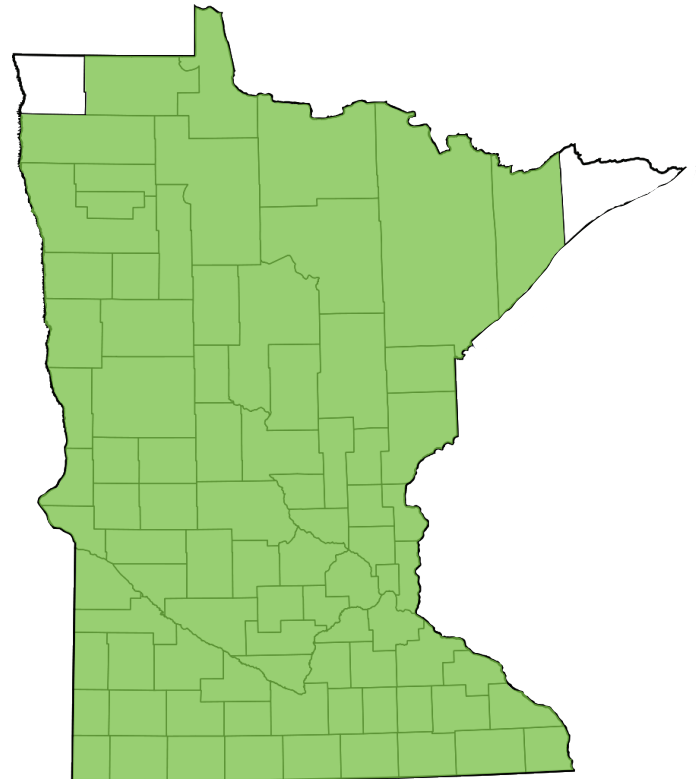
In 2023, the I-494 Corridor Commission received \$300,000 per year in state funding for FY24-25 that will boost their ability to promote alternatives to driving alone to work, including:

- Telework
- Vanpools
- Carpools
- Transit
- Biking to work

The Commission is focused on ensuring this funding is ongoing and sustainable into future years.

State of MN

People from 85 out of 87 Counties use I-494 between Hwy 169 and the MSP airport daily.



Data source: 2019 Metro District NexTen report using GPS data through StreetLight InSight

Jobs through Transportation and Transit Improvements and Corridors of Commerce

With more jobs than downtown Minneapolis and downtown Saint Paul combined, the I-494 corridor is a critical economic development driver for Minnesota. Investing in the corridor's transportation infrastructure will keep this engine running, growing and producing dividends for the state.

Support Transportation Economic Development Program

The Commission strongly encourages increased investment in the Transportation Economic Development (TED) program. The TED program was created to support local transportation projects that create jobs and improve economic opportunities while making needed improvements to our roadways and interchanges. It offers innovative financing options and allows private sector partners to participate, e.g. United Health/Bren Road and I-494/Penn Ave.

A large number of excellent examples of TED funding candidates are highlighted on our project priority map. They have local backing and a portion of the funds

necessary to proceed. The TED program can provide a funding match.

Support Corridors of Commerce

The Corridors of Commerce Program funds projects that reduce barriers to commerce by improving the safe and efficient movement of goods and services throughout the state. It aims to increase highway capacity and freight movement on segments where bottlenecks occur. The program uses trunk highway bonding for projects that are not already in the state's four-year State Transportation Improvement Program (STIP).

The Commission deeply appreciates the Corridors of Commerce funding for the I-494 Corridor granted in 2018. The Commission urges the legislature to continue adequately funding this program going forward.

When employers provide commuter programs such as a transit benefit, telework, vanpools, preferential carpool parking; one in five employees kick their solo commuting habit. That's a 20% shift!



I-494: Airport to 169 Project



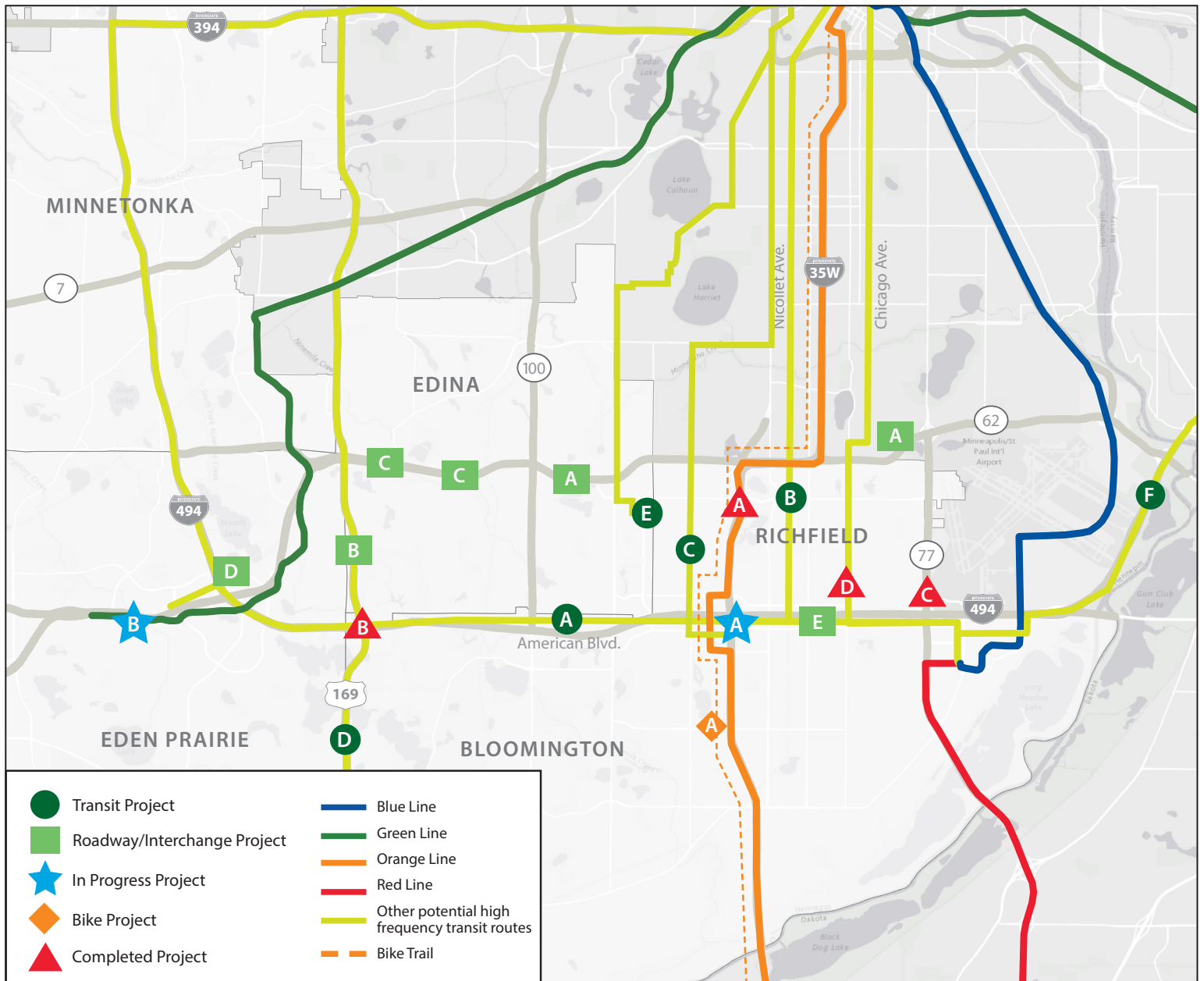
Work is underway on the first phase of a major state and federally funded project to improve I-494 from TH 169 to the MSP Airport. The first phase includes significant improvements to I-494/I-35W interchange, several new bridges over I-494, and a new E-ZPass lane between East Bush Lake Road and I-35W.

Because of funding limitations and construction impacts, the project must be built in two phases. The vitally needed second phase is still unfunded. That phase would complete the project vision by extending the new E-ZPass lane from TH 169 to TH 77, finalizing improvements at 82nd Street, and replacing a railroad bridge to allow the expansion. MnDOT estimates the investment needed to complete phase two at \$260 million.

Given that the proposed project will increase capacity on I-494 and dramatically improve the reliability of the average rush hour trip, the 494 Corridor Commission strongly supports additional funding that would allow MnDOT to complete the project in its entirety.

I-494 is a heavily used statewide corridor

- 23% of trips on I-494 are from greater MN
- People from 85 out of 87 Minnesota counties use I-494 between Hwy 169 and the MSP Airport daily



I-494 Corridor Commission Priority Infrastructure Projects

(projects below correspond to map above, not in priority ranking)

Roadway and Interchange Projects

- A** Improve TH 62 in each direction to reduce traffic congestion from Hwy. 77 to Hwy. 169
- B** Hwy. 169/Valley View Road interchange reconstruction
- C** Reconstruct the Tracy Ave. & TH 62 interchange and the Gleason Rd. & TH 62 interchange
- D** Flyover Exit Ramp from NB I-494 to WB TH 212/TH 5 in Eden Prairie
- E** Fully fund the 494: Airport to 169 project

Bike Projects

- A** Orange Bike Trail - Long distance route connecting Burnsville, Bloomington, Richfield, and Minneapolis

Transit Projects

- A** American Blvd. Arterial BRT, connecting the Blue, Red, Orange and Green Transitways with the high employment corridor along I-494
- B** Nicollet Arterial BRT
- C** Johnson/Lyndale/Penn Arterial BRT
- D** Hwy. 169 BRT, connecting Dakota and Scott Counties with Eden Prairie, Bloomington, Edina, Minnetonka, Hopkins, St. Louis Park and Downtown Minneapolis
- E** METRO E Line BRT
- F** Riverview/W. 7th Street Corridor; Transit service connecting Bloomington, MSP and downtown Saint Paul

In Progress Projects

- A** I-494/I-35W Interchange Phase 1
- B** METRO Green Line Ext (Southwest LRT)

Completed Projects

- A** METRO Orange Line BRT
- B** I-494/Hwy. 169 Interchange
- C** 77th Street underpass under TH 77
- D** METRO D-Line arterial BRT connecting Bloomington, Richfield and downtown Minneapolis