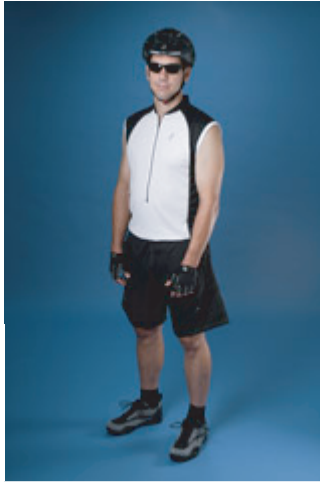


CIVIA CLOTHING RECOMMENDATIONS

What to wear? It's a timeless question that's challenging to answer. With variables like temperature, precipitation, wind, cloud cover, season-and personal comfort level-it's impossible to provide a simple answer. That said, here's what we think you should wear. The clothing recommendation guide provides advice about how to dress for your upcoming ride. During development, we surveyed people who ride in all sorts of weather about what they wear. From this, and our personal experiences, we made specific clothing recommendations. When you're logged in to civiacycles.com, the front page weather forecast and clothing recommendation are tailored to your ZIP code and riding times. The table below shows the full range of weather-based clothing options. To allow for individual comfort levels, we created a temperature adjustment feature. This allows you to adjust the kind of clothing recommendation you receive for a given temperature. For example, if you are always warm, the guide will recommend lighter clothing options. If you're generally cool, the guide will advise more layers. The guide is most beneficial to those:- Riding at a temperature they've never ridden in before- Who have not ridden in a while and want advice about different weather conditions- Newer riders who don't have the know how to dress for a comfortable temperature- Who want to see what riding at 20-below looks like And lastly, we state the obvious: these are only suggestions. You must ultimately use your own best judgment when dressing for a ride. So remember, when it's cold, skin does freeze, and when it's hot, heat stroke can kill.

DRY

Dry 100°

**HEAD**

Helmet, eyewear

TORSO

Sleeveless jersey

LEGS

Shorts

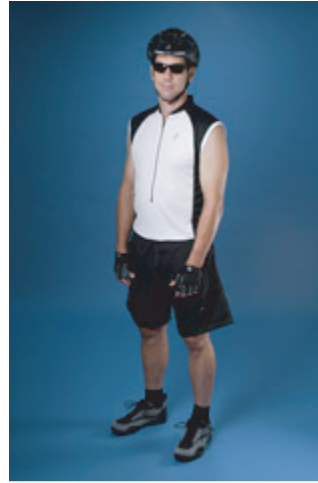
HANDS

Short finger gloves

FEET

Short socks, shoes

Dry 90°

**HEAD**

Helmet, eyewear

TORSO

Sleeveless jersey

LEGS

Shorts

HANDS

Short finger gloves

FEET

Short socks, shoes

Dry 80°

**HEAD**

Helmet, eyewear

TORSO

Short sleeve jersey

LEGS

Shorts

HANDS

Short finger gloves

FEET

Short socks, shoes

Dry 70°

**HEAD**

Helmet, eyewear

TORSO

Short sleeve jersey

LEGS

Shorts

HANDS

Warm weather, full finger gloves

FEET

Short socks, shoes

Dry 60°

**HEAD**

Helmet, eyewear

TORSO

Short sleeve jersey, short sleeve base layer, arm warmers

LEGS

Knickers

HANDS

Warm weather, full finger gloves

FEET

Short socks, shoes

Dry 50°

**HEAD**

Helmet, eyewear, headband/ear covering

TORSO

Short sleeve jersey, short sleeve base layer, arm warmers

LEGS

Knickers

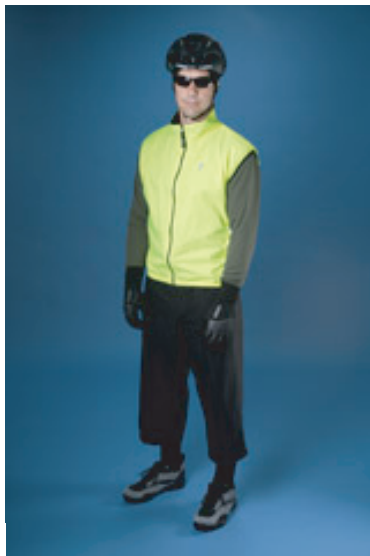
HANDS

Warm weather, full finger gloves

FEET

Mid socks, shoes

Dry 40°



HEAD
Helmet, eyewear, skull cap

TORSO
Long sleeve jersey, long sleeve base layer, wind breaking vest

LEGS
Knickers with leg warmers

HANDS
Cool weather, full finger gloves

FEET
Wool socks, shoes

Dry 30°



HEAD
Helmet, eyewear, skull cap

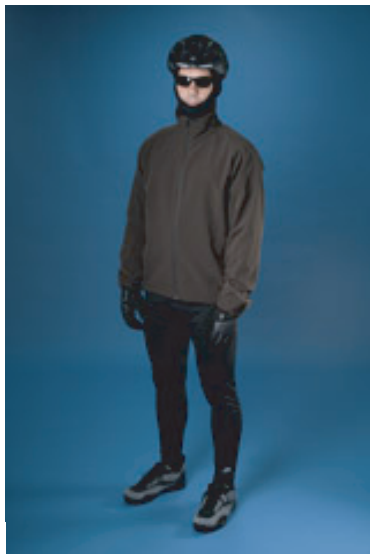
TORSO
Long sleeve jersey, long sleeve base layer, wind breaking jacket

LEGS
Knickers with leg warmers

HANDS
Cool weather, full finger gloves

FEET
Wool socks, shoes

Dry 20°



HEAD
Helmet, eyewear, balaclava

TORSO
Long sleeve thermal jersey, long sleeve base layer, wind breaking jacket

LEGS
Insulated tights

HANDS
Cold weather, full finger gloves

FEET
Thick wool socks, boots

Dry 10°



HEAD
Helmet, goggles, balaclava

TORSO
Long sleeve thermal jersey, long sleeve base layer, insulatec wind breaking jacket

LEGS
Insulated tights

HANDS
Cold weather mitten

FEET
Thick wool socks, boots

Dry 0°



HEAD
Helmet, goggles, face shield

TORSO
Long sleeve thermal jersey, long sleeve base layer, insulated wind breaking jacket

LEGS
Insulated tights with baggy overlayer

HANDS
Cold weather mittens

FEET
Thick wool socks, boots

Dry -10°



HEAD
Helmet, goggles, fac shield

TORSO
Long sleeve thermal jersey, short sleeve jersey, long sleeve base layer, insulatec wind breaking jacket

LEGS
Insulated tights with baggy overlayer

HANDS
Cold weather mitten with chemical heatin pad

FEET

Dry -20°



HEAD

Helmet, goggles, face shield

TORSO

Long sleeve thermal jersey, short sleeve jersey, long sleeve base layer, insulated wind breaking jacket

LEGS

Insulated tights with baggy overlayer

HANDS

Cold weather mittens, with chemical heating pad

FEET

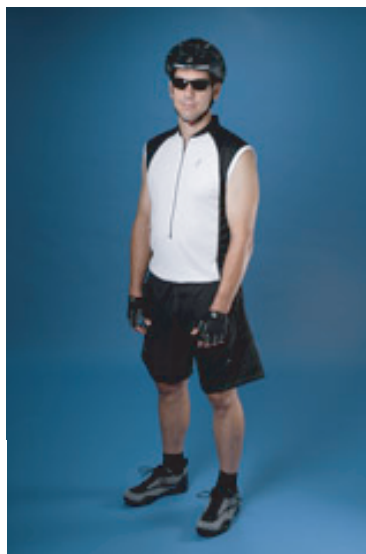
Thick wool socks, boots, chemical heating pads

Wet 100°



- HEAD**
Helmet, eyewear
- TORSO**
Sleeveless jersey
- LEGS**
Shorts
- HANDS**
Short finger gloves
- FEET**
Short socks, shoes

Wet 90°



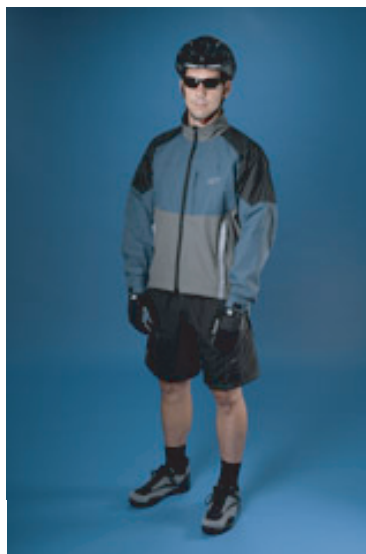
- HEAD**
Helmet, eyewear
- TORSO**
Sleeveless jersey
- LEGS**
Shorts
- HANDS**
Short finger gloves
- FEET**
Short socks, shoes

Wet 80°



- HEAD**
Helmet, eyewear
- TORSO**
Short sleeve jersey
- LEGS**
Shorts
- HANDS**
Short finger gloves
- FEET**
Wool socks, shoes

Wet 70°



- HEAD**
Helmet, eyewear
- TORSO**
Short sleeve jersey, waterproof jacket
- LEGS**
Shorts
- HANDS**
Warm weather, full finger gloves
- FEET**
Wool socks, shoes

Wet 60°



HEAD

Helmet, eyewear

TORSO

Short sleeve jersey, waterproof jacket

LEGS

Knickers

HANDS

Warm weather, full finger gloves

FEET

Wool socks, shoes

Wet 50°



HEAD

Helmet, eyewear headband/ear covering

TORSO

Short sleeve jersey, short sleeve base layer, arm warmers, waterproof jacket

LEGS

Knickers

HANDS

Waterproof full finger gloves

FEET

Wool socks, shoes

Wet 40°



HEAD

Helmet, eyewear, skull cap

TORSO

Long sleeve jersey, long sleeve base layer, waterproof jacket

LEGS

Knickers with waterproof over pants

HANDS

Waterproof full finger gloves

FEET

Thick wool socks, shoes

Wet 30°



HEAD

Helmet, eyewear skull cap

TORSO

Long sleeve jersey, long sleeve base layer, waterproof jacket

LEGS

Tights with waterproof over pants

HANDS

Waterproof full finger gloves

FEET

Thick wool socks shoes